

RHEV 2.2 / 3.0 - ****trust not granted**** 1

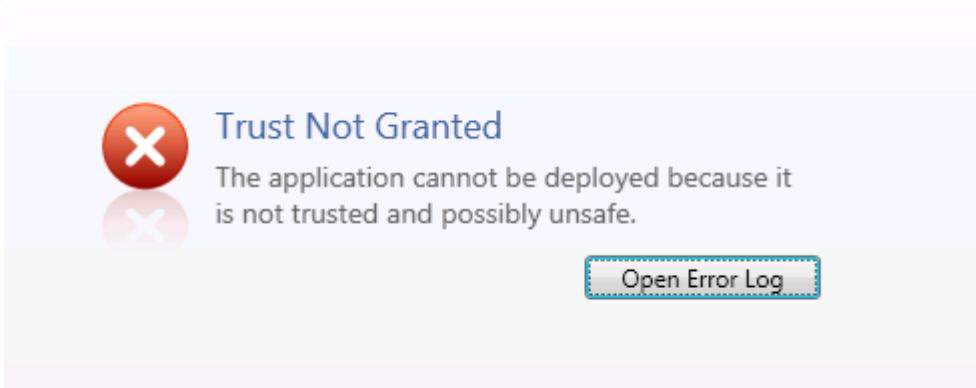
RHEV 3.0 1

RHEV 2.2 1

..... 2

RHEV 2.2 / 3.0 - granted**

**trust not



RHEV 2.2 / 3.0

RHEV

RHEV 3.0

RHEV 3.0

rhev-admin-portal-wpf

3.0.9

RHEV 2.2

RHEV 2.2

가

- 2013 1 1
- 가
-

```
%systemroot%\Microsoft.NET\Framework\v2.0.50727\CasPol -q -machine -addgroup
All_Code -url http://InternalWebServer/*
FullTrust -n XBAPSecurity -polchgprompt off
```

InternalWebServer

URL

-
-

- <https://access.redhat.com/solutions/315453>
- <https://access.redhat.com/solutions/46583>

From: <http://linuxdata.kr/dokuwiki/> - AllThatLinux!

Permanent link: http://linuxdata.kr/dokuwiki/doku.php/rhev_2.2_3.0_-_%EA%B4%80%EB%A6%AC%ED%99%94%EB%A9%B4_%EC%A0%91%EC%86%8D%EC%8B%9C_trust_not_granted_%EB%AC%B8%EC%A0%9C_%ED%95%B4%EA%B2%B0%EB%B0%A9%EB%B2%95

Last update: 2016/04/28 13:23

